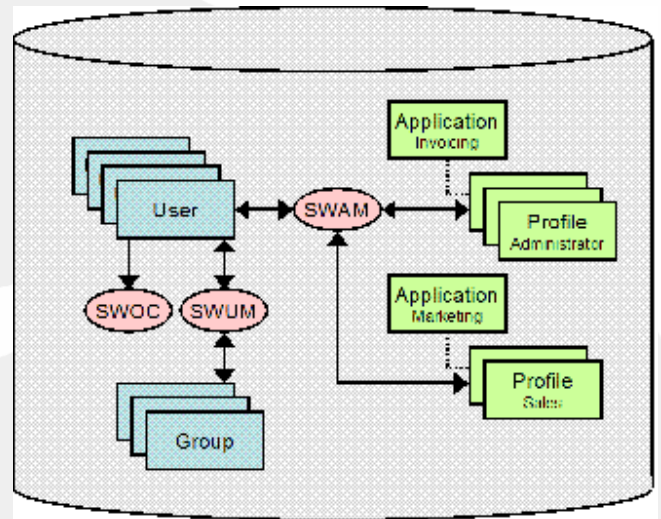


## SmartWave Identity Management modules

DATASHEET  
July 2006

*SmartWave proposes three modules that support key processes of Identity Management requirements:*

<i>SWUM</i>	<i>Users Management</i>
<i>SWOC</i>	<i>Organization Chart Viewer</i>
<i>SWAM</i>	<i>Application Access Management</i>



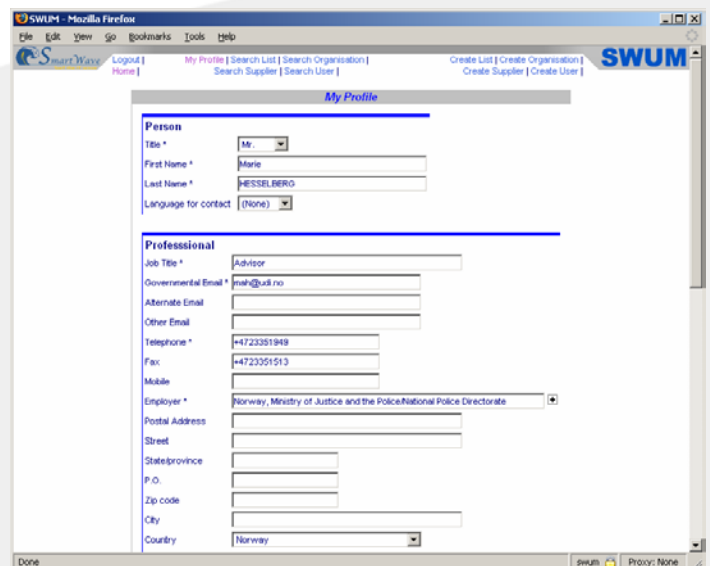
## User Management (SWUM)

*User Management (SWUM) is an easy to use Web based user and group entities management application.*

*SWUM supports the creation, modification, deletion of users and groups and their association with applications.*

*Two access level are available:*

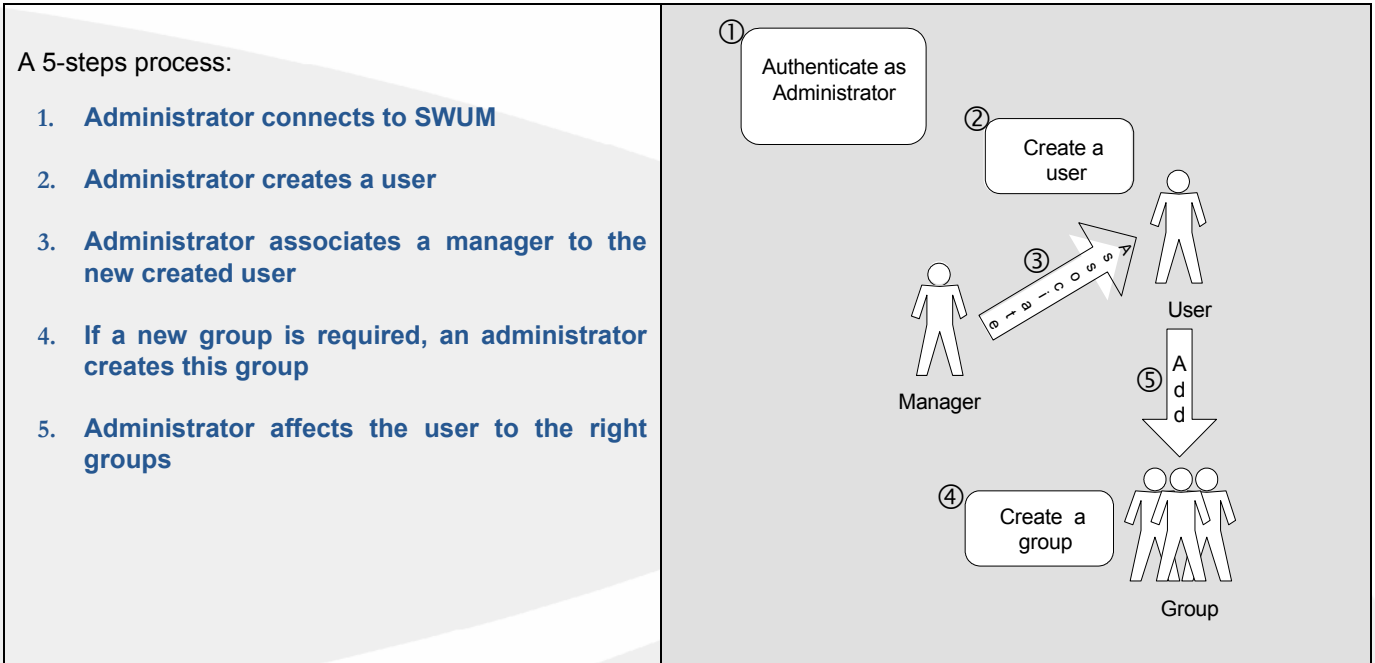
- **Administrators:** they manage all entities and have access to all functions
- **Standard:** provides access to search, view and self-provisioning



*SWUM is natively designed to integrate any LDAP V3 server from the main vendors of the market (Sun, Microsoft, Oracle, Novell, OpenLDAP, etc.), and also any provisioning solution, including the SmartWave connectors SWC.*

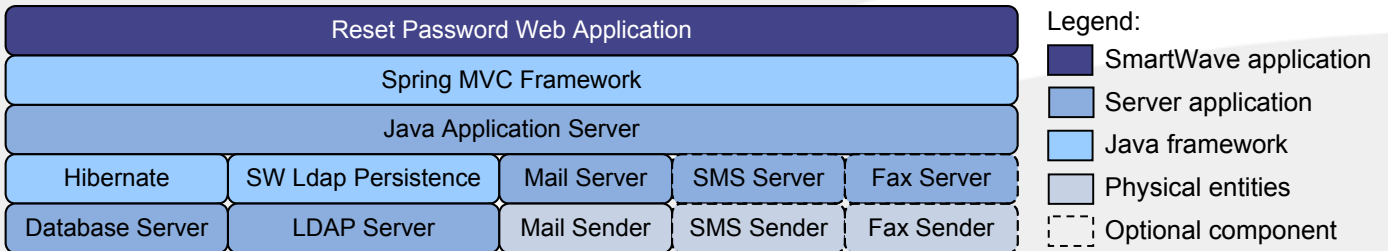
# SWUM Processes

*A typical users and groups creation process:*



## Architecture

*Below are the components used by the SmartWave solution. SMS and fax server are optional.*



### *Procurement:*

*SWUM and SWAM are independent. They can be can be odered as standalone modules, or together.*

*SWOC, theOrg Charts module, is an option of SWUM.*

# Application Management (SWAM)

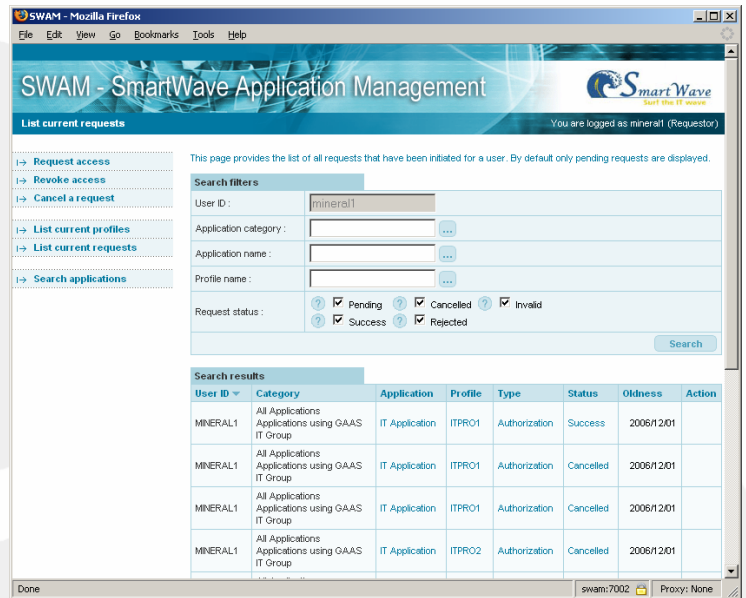
*Access Management (SWAM) is an easy to use Web based application management module that supports:*

- *Request for access authorization and revocation (profile)*
- *Acceptance and denial of access requests*
- *Viewing of process (pending requests, profiles, applications)*

*Two access levels are available:*

*- Administrators: they manages all entities and have access to all functions.*

*- Standard: provides access to search, view and self-request.*

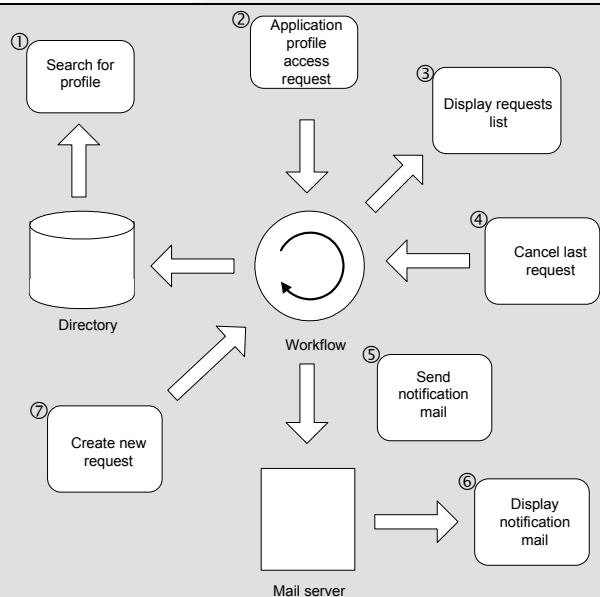


## SWAM Processes

*A typical self-access request process including pending request cancellation:*

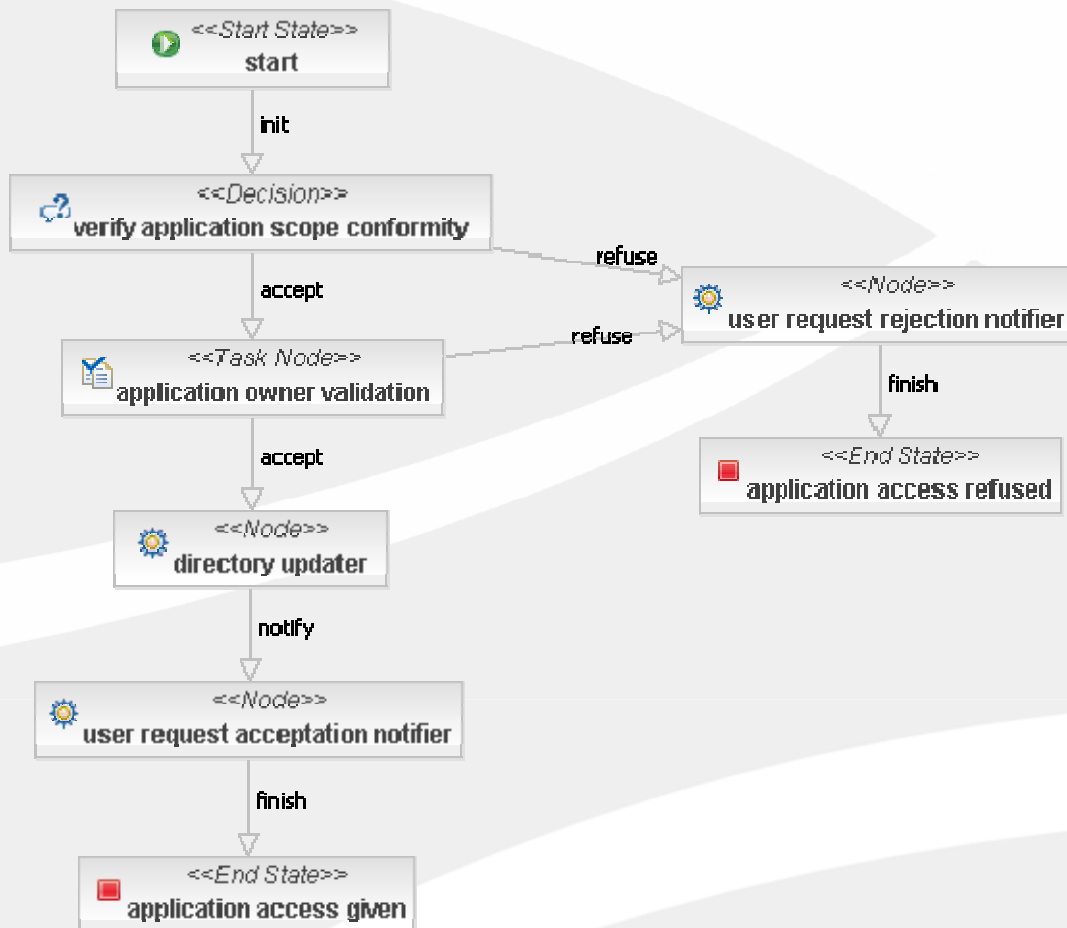
A 7-steps process:

1. Administrator or end user connects to SWAM to find the available application's profiles
2. SWAM user selects one profile to request access for
3. SWAM user has access to the status of his/her application access requests
4. If needed, SWAM user can cancel a pending request
5. If request is canceled, the workflow sends a notification through email
6. The email can be tracked and archived for compliancy
7. SWAM user can restart the application access request procedure



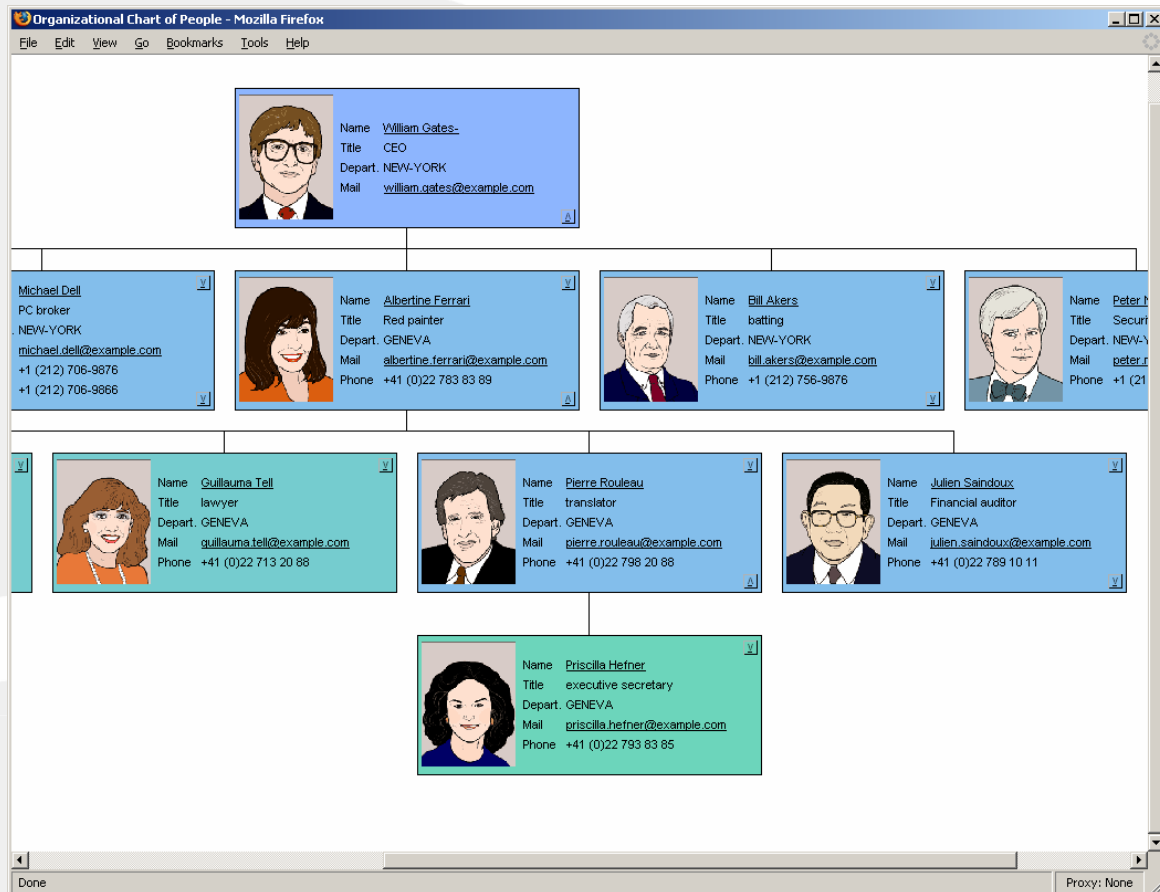
## Workflow

*SWUM and SWAM are provided with a powerful embedded workflow engine (JBPM) but can also use any external workflow/BPM product with light integration.*



- *Request for access authorization and revocation based on profile*
- *Acceptance and denial of access requests*
- *Simple to complex workflows*
- *Viewing of process and ID information (pending requests, profiles, applications)*
- *Graphical workflow editor included*
- *Archive database*

# Organization Charts Viewer (SWOC)



*Provides a global view of users and / or departments:*

- *View of the full organization chart of the company*
- *Zoom on a user*
- *Navigation between user detailed ID records and organization chart*
- *Organization chart built using directory data*
- *Dynamic expansion and resizing of organization chart based on user interaction*
- *Highly customizable (XML): thumbnails, tree construction options*

*Procurement:*

*SWOC is an option of SWUM, that is ordered separately. The user management modules must be installed first.*

For more information email us at: [info@smartwavesa.com](mailto:info@smartwavesa.com)