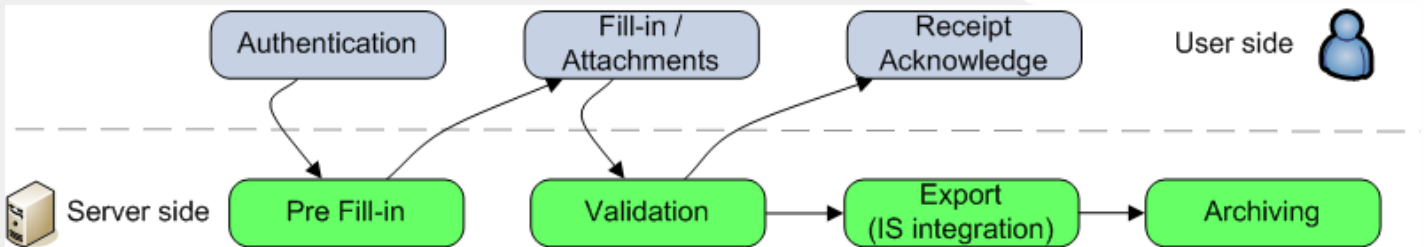


SmartFormsDriver is an application designed to manage the design, capture, validation and transmission of data originated from PDF forms in a secured environment in full integration with back office enterprise applications.



FUNCTIONALITY

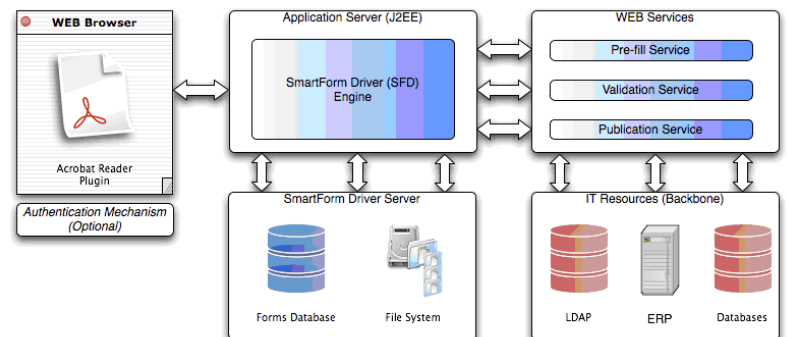
- Filtering of forms lists based on roles for authenticated accesses
- Pre-filing of forms based on user's data collected from external databases (SGBD, ERP, LDAP...)
- Pre-loading of closed data lists to support data entry and data control using external databases.
- Local (e.g. formats) and server (e.g. references) control of data entered
- Addition of attachments: they are listed in the form but stored as separate files
- Viewing of forms before transmission
- Acknowledgment to user with a static PDF form including an electronic signature to guaranty the authenticity of data transmitted.
- Generation by the server of an XML file for data processing
- Immediate access to data submitted to enterprise systems.

Environments :

- Operating systems : MS-Windows, Linux , Unix. (server is developed in Java 1.5.)
- Any JDBC compatible database (
- Application servers : J2EE compatibles (EJB management not required) Apache Tomcat, jBoss, BEA WebLogic, IBM WebSphere
- Authentication using any J2EE compatible mechanism (LDAPv3 , SSO,...)

TECHNOLOGIES USED

- J2EE architecture
- WEB services
- Evolutive architecture
- Independent SmartFormsDriver database or integration to an existing database
- Advanced logs management using LOG4J



This information can be modified without prior writing.

For more information: info@smartwavesa.com